



**Shifa Center of
Professional Excellence
(SCOPE)
Annual Report
July 2021 - June 2022**

Executive Summary

Shifa Center of Professional Excellence (SCOPE) was established under the umbrella of Shifa Foundation. The fundamental goal of SCOPE is to strive for excellence in medical teaching and professional learning. Encouraging research ventures is also one of the important goals of SCOPE.

Vision Statement:

To model state-of-the art design, facilitation, and management of learning by providing a high quality, comprehensive, and meaningful content to our learners.

Mission Statement:

To be the nation's state of the art learning and training facility in education, innovation and research.

To accomplish this mission, we integrate evidence and best practices from scientific education and develop activities that tend to enhance knowledge, skills and practices of health care professionals. This ultimately is reflected in better health outcomes.

Objectives:

- To learn, grow and transform through quality education and training.
- To achieve excellence in teaching-learning and research projects
- To undertake collaborative projects with academia and industries
- To provide quality learning that is strategic, measurable, and effective.
- To enhance the ability of aspiring professionals to train people for the role they are taking, the role they are in and the role they want.

Operational Programs:

SCOPE's functional operations programs are;

- *Continuing Medical Education* with the ultimate responsibility to update knowledge, skills and practices of healthcare teams.
- *Life Support Training* with the ultimate responsibility to provide the complete suite of Emergency Cardiovascular and Cardio-Pulmonary Resuscitation training.
- *Training and Development* with the ultimate responsibility to bridge knowledge gaps by providing capacity building services and innovative solutions.
- *Research & Ethics* with the ultimate responsibility to develop proposals and promote the research activities.

Executive Summary

Why SCOPE?

➤ **Because We Are Catalysts:**

- We demonstrate that an excellent training is neither very long term nor very expensive.
- We believe in learn, grow and transform through quality education and training. So, we want to play our role as a catalyst for positive change.

➤ **Because Our Learning Environment:**

- Organizes needs-based education, evidence-based learning and systems-based practice.
- Uses group activities, large group didactic lectures, workshops/small group discussions, class exercises, hands-on training, case-based scenarios, panel discussions and case studies as training and learning methodology.
- Matches target audience needs and learning objectives to educational content can be achieved through selection of the most appropriate learning format.

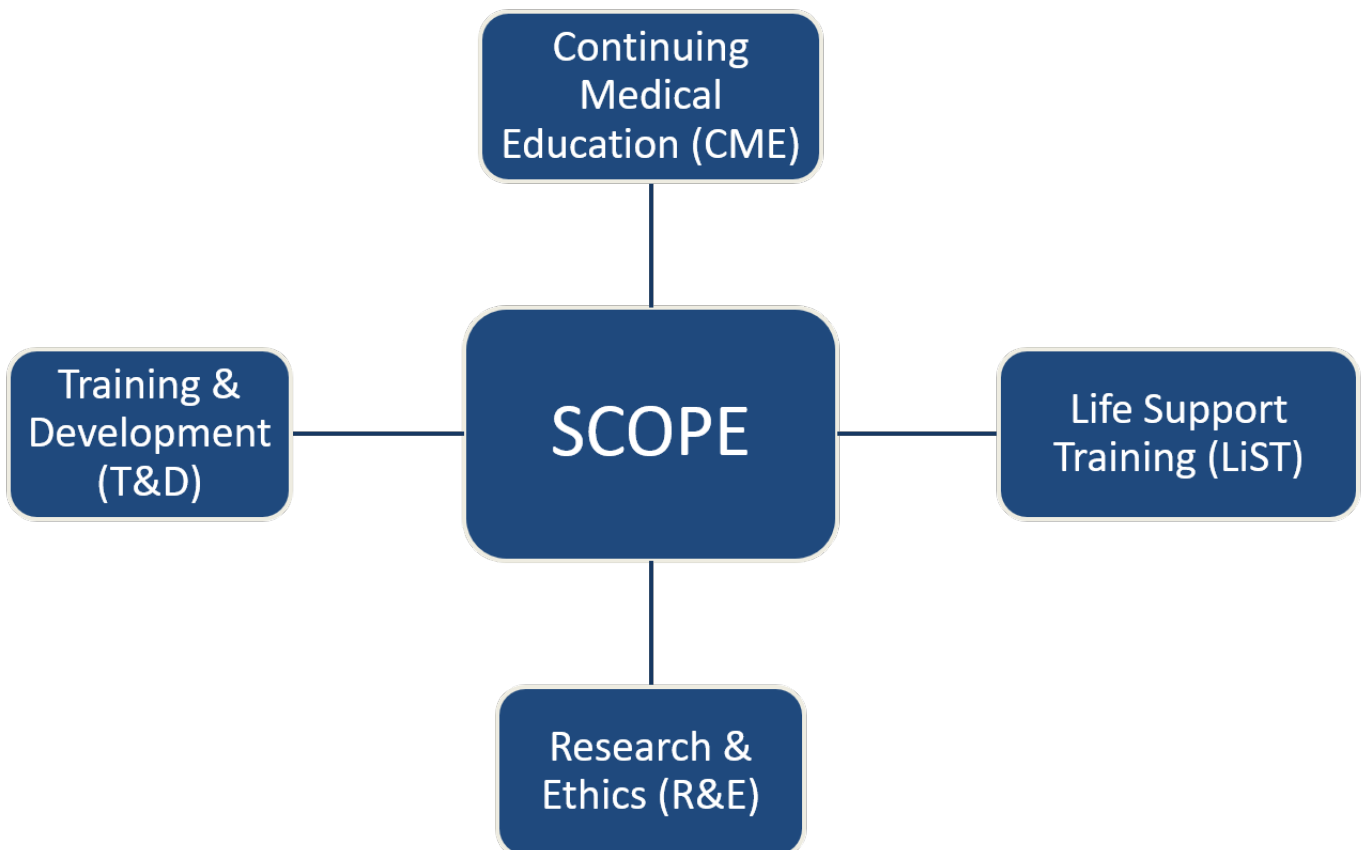
➤ **Because Our Faculty Inspires:**

- We are proud to have a very rich faculty resource base of Shifa International Hospitals and Shifa Tameer-e-Millat University, our partner organizations.
- We help different organizations and professionals to achieve new dimensions of exceptional standards.
- Our resource base is not limited to Shifa International Hospitals and Shifa Tameer-e-Millat University but it comprises of consultants, professionals and executives who are highly skilled, experienced, learned and passionate trainers.

Annual Report

Shifa Center of Professional Excellence (SCOPE), an integral part of Shifa Foundation, established with the mission to be the nation's state-of-the-art learning and training facility in education, innovation and research.

To accomplish this mission, we integrate evidence and best practices from scientific education and implement to develop and assess activities that tend to enhance skills, strategy, and performance, ultimately resulting in better health outcomes.



Continuing Medical Education (CME)

Mission Statement:

To maintain, develop and enhance the knowledge, skills, competence and professional performance by providing need-based education for physicians and healthcare providers which enables optimum provision of healthcare and improves patient outcomes.



HIGHLIGHTS

NICU MASTERCLASS:

To cover the wide range of evidence-based topics in Management of neonatal hypoglycemia, Approach to jaundice in neonates and management, Nutrition in NICU for term and pre-term babies and Fluid and electrolyte management in NICU, a masterclass was curated by Shifa Center for Professional Excellence (SCOPE) under the leadership of Dr. Yasser Masood and Dr. Salman Bashir Wani.

Dr. Yasser Masood, (Consultant Neonatologist - Shifa International Hospitals Ltd) discussed how to improve nutrition and weight gain for preterm babies in NICU and following discharge from the hospital. He also discussed how sick babies in NICU should receive different types of fluids and electrolytes.

Dr. Salman Bashir Wani, (Consultant Neonatologist - Shifa International Hospitals Ltd) discussed which new born are at risk of hypoglycemia (low blood sugar) and how to identify and treat them. He also discussed various causes of jaundice in new born, which tests to perform and how to treat it.

All sessions generated a huge amount of discussion and questions from the participants who came from across



MANAGEMENT OF HEPATOCELLULAR CARCINOMA - AN UPDATE:

Shifa International Hospital and Shifa Center of Professional Excellence collaborated to conduct a hybrid seminar titled as an update on Hepatocellular Carcinoma management.

Speakers focused on presenting the most recent updates and improving newcomers' understanding of Hepatocellular Carcinoma Management methods.



HIGHLIGHTS

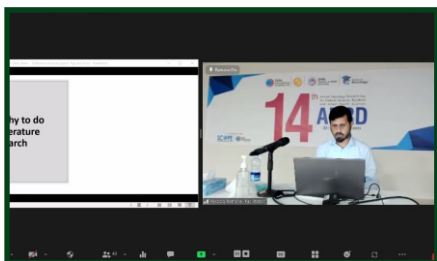
14TH ANNUAL NEUROLOGY RESEARCH DAY – ANRD:

Shifa Center of Professional Excellence (SCOPE) in collaboration with Shifa International Hospitals has hosted the 14th Annual Neurology Research Day to offer researchers with a forum to present their research publications.

Judges for 14th Annual Neurology Research Day includes:

- Prof. Dr. Muhammad Ather Javed, Professor and Head Neurology department, Central Park Teaching Hospital, Lahore.
- Dr. Farooq Azam Rathore, Consultant and Head of Department Rehabilitation Medicine PNS Shifa Hospital, Karachi.
- Dr. Husnain Hashim, Consultant Neurologist and Stroke specialist, Head of Neurology Department of Fauji Foundation Hospital.
- Prof. Dr. Sajida Naseem Associate Professor, Community Medicine, Shifa Tameer-e-Millat University, Islamabad.

At the conclusion of the 14th Annual Neurology Research Day, Dr. Muhammad Azhar Saeed, Chair of the Organizing Committee – ANRD, and Dr. Maimoona Siddqui, Head of Neurology Department, Shifa International Hospitals Ltd. praised the efforts of young researchers who worked hard to complete their research articles in a timely manner and awarded prizes to the 14th Annual Neurology Research Day winners.



IMPORTANCE OF KEY PERFORMANCE INDICATORS IN IMPROVING PHARMACY PRACTICE:

Shifa Center for Professional Excellence (SCOPE) organized a lecture on importance of key performance indicators in improving pharmacy practice to update the information of pharmacist so that they can apply the updated methodologies to oversee the performance.

Mr. Nabeel Qamar Alvi Pharm – D, MS (Healthcare Management), Cert. Lead Auditor (IRCA, UK) and Assistant Manager Pharmacy (QA, Medication Safety) SIH, described the topic with real time examples and cases.

HIGHLIGHTS

NON-INVASIVE VENTILATION – WORKSHOP:

Non-Invasive Ventilation is being increasingly used worldwide for sick neonates in NICUs.

Shifa Center for Professional Excellence (SCOPE) organized a Non-Invasive Neonatal Ventilation Workshop. The workshop consisted of lectures and hands-on training.

Dr Yasser Masood (Consultant Neonatologist – SIH) talked about CPAP, its indications, various devices which are used for delivery of CPAP, how to wean CPAP and also discussed nursing and general neonatal supportive care for babies on CPAP.

Dr. Salman Bashir Wani (Consultant Neonatologist – SIH) discussed High Flow Nasal Cannula Oxygen, its indications, devices for delivery of HFNC, how to wean HFNC and also discussed general supportive care. Later on, participants were given hands-on training on different devices used to deliver CPAP and HFNC.

They were also shown different types of circuits, masks and nasal cannula used for delivery of NIV in Neonates.



AMBULATORY CARE INFECTIONS:

SCOPE in collaboration with Department of Pharmacy, Shifa International Hospitals Ltd. has organized a lecture on Ambulatory Care Infections.

Aim of the lecture was to acknowledge appropriate Pharmacological and non-pharmacological treatment regimens for various patient's populations with the medical conditions of Urinary Tract Infection, Ophthalmic Infections, Acute Rhinosinusitis, Pharyngitis, Otitis Media and Influenza.

Lecture was delivered by Ms. Sundas Maria, Clinical & Infectious Diseases, Pharmacist, Shifa International Hospitals Ltd.

HIGHLIGHTS

NEPHROLOGY AND DIALYSIS – WORKSHOP:

SCOPE in collaboration with the Department of Nephrology, Shifa International Hospital Ltd. organized a one-day workshop on Nephrology and Dialysis.

Aim of the workshop was to strengthen knowledge, skill set, and practice in treating diverse types of kidney diseases and complications of dialysis.

Workshop started with the welcome note by Dr. Syed Nayer Mahmud (Chief of Medicine & Allied, SIHL) followed by detailed lecture on Basics of Nephrology, Dialysis with Anemia, CKD - MBD, Access Management and Protocols, Kidney Stone Disease, State of the art lectures on Women Health and Kidney Disease, CKD Pathway, Infection Control, Peritoneal Dialysis and Transplantation, Kidney Pathology and Interpretation.

Dr. Syed Farhat Abbas (Head of Department - Nephrology, SIHL) concluded the workshop by appreciating the efforts of Dr. Danyal Hassan (Consultant Nephrology, SIHL) in planning this workshop and thanked the participants for joining.



SPECTRUM OF MALIGNANT AND NONMALIGNANT TUMORS OF STOMACH, WHAT RADIOLOGISTS NEED TO KNOW ABOUT CT CANCER STAGING; PEARLS AND PITFALL:

SCOPE in collaboration with SIHL has organized the guest lecture on the Spectrum of malignant and nonmalignant tumors of stomach, what radiologists need to know about CT cancer staging; pearls and pitfall.

The activity was designed to update clinical knowledge that helps healthcare providers to improve daily practice, enhance patient confidence and improve patient safety.

Speaker of the guest lecture was Dr. David Dawson Bartlett Bates, Assistant Professor of Radiology, Weill Cornell Medical College, New York, NY discussed the important and latest cases which helps newcomers to remove the ambiguity about the cases.

HIGHLIGHTS

ULTRA SOUND GUIDED PAIN INTERVENTIONS:

Shifa International Hospitals Ltd in collaboration with Shifa Center of Professional Excellence (SCOPE) and Society for Treatment and Study of Pain (STSP) organized a workshop on “Ultra Sound Guided Pain Interventions”.

Prof. Dr. M. Iqbal Khan (Vice Chancellor, Shifa Tameer –e-Millat University) appreciated the efforts of the pain medicine department and said that this workshop will give exposure about the importance of pain management in crucial areas.

Prof. Dr. M. Zameer Rajput (Consultant Anesthesia & Director SICU, Shifa International Hospitals Ltd, Islamabad) and Dr. Salman A. Saleem (Consultant Pain Medicine, Shifa International Hospitals Ltd, Islamabad) conducted the hands-on training for the participants.



HIGH RELIABILITY ORGANIZATIONS (HROs) VS HEALTHCARE ORGANIZATIONS (HCOs):

Pharmacy department of SIHL in collaboration with the SCOPE has organized a lecture on High Reliability Organizations (HROs) vs Healthcare Organizations (HCOs).

Ms. Salwa Ahsan, Chief of Pharmacy, SIHL discussed the major issues in both scenarios and answered the participant's questions live.

HIGHLIGHTS

INSTRUCTIONAL SCAFFOLDING TO IMPROVE CRITICAL THINKING AND CLINICAL REASONING OF MEDICAL STUDENTS: TEAM BASED LEARNING IN AN ONLINE SYNCHRONOUS SETUP:

Shifa Center for Professional Excellence (SCOPE) organized in collaboration with Shifa College of Medicine (SCM) organized a workshop on Instructional Scaffolding to Improve Critical Thinking and Clinical Reasoning of Medical Students: Team Based Learning in an Online Synchronous Setup.

Dr. Abida Shaheen, Professor & HOD Pharmacology, STMU, Dr. Tatheer Zahra Associate Professor, STMU, Dr. Fahad Azam Associate Professor, STMU, Dr. Shazia Irum Assistant Professor, STMU discussed the team-based learning in medical sector and elaborated the mechanism of two model which can be used for better learning and understanding medical program.

They stressed on that TBL model was integral in developing students' knowledge and understanding of basic science concepts, the CBL model was integral in developing students' clinical reasoning skills. The strengths of CBL relative to TBL included the development of authentic clinical reasoning skills and guided facilitation of small group discussion. Findings suggest that delivery of a medical curriculum may be enhanced through increased vertical integration, applying TBL in earlier phases of the medical program where the focus is on basic science principles, with CBL becoming more relevant as students move towards clinical immersion.

ADVANCEMENT IN GYNECOLOGICAL MINIMAL INVASIVE TECHNIQUES:

Shifa International Hospital in collaboration with Shifa Center of Professional Excellence (SCOPE) and Society of Obstetrician & Gynecology of Pakistan (Islamabad Chapter) organized Laparoscopic Surgical workshop to encourage the applications of gynecological minimal invasive techniques.

Dr. Shazia Fakhra (Chief of Obs/Gyne & Consultant Obs/Gyne, Shifa International Hospitals Ltd, Islamabad), Dr. Shahnaz Nawaz (Consultant Obs/Gyne, Shifa International Hospitals Ltd, Islamabad) & Dr. Raazia Tanveer (Consultant Obs/Gyne, Shifa International Hospitals Ltd, Islamabad) were the speakers.



HIGHLIGHTS

NEONATAL RESUSCITATION WORKSHOP:

Shifa International Hospitals Ltd. in collaboration with Shifa Center of Professional Excellence (SCOPE) organized workshop series to increase the neonatal care as per the standards applied globally.

Dr. Shahid Nazir (Consultant Neonatologist & Associate Chief of Pediatrics, Shifa International Hospitals Ltd, Islamabad), Dr. Qamar Ali (Consultant Neonatologist, Shifa International Hospitals Ltd, Islamabad) & Dr. Salman Bashir Wani (Consultant Neonatologist & Associate Chief of Pediatrics, Shifa International Hospitals Ltd, Islamabad) conducted the workshop.

This hands on demonstration updated the skills set and performance of participants in terms of resuscitation.



WORKSHOP ON LAPAROSCOPIC GYNECOLOGICAL SURGICAL SKILLS:

Shifa Center of Professional Excellence (SCOPE) conducted a "Workshop On Laparoscopic Gynecological Surgical Skills" in collaboration with Shifa International Hospitals Ltd, Islamabad, to provide hands-on experience of basic and advanced laparoscopic skills.

The workshop was led by Dr. Shazia Fakhar (Chief & Consultant Obstetrician and Gynecologist, Shifa International Hospitals Ltd, Islamabad) and Dr. Shahnaz Nawaz (Associate Chief & Consultant Obstetrician and Gynecologist, Shifa International Hospitals Ltd, Islamabad).

The goal of this workshop was to improve performance in obtaining clinical outcomes by solidifying knowledge and skill sets.



HIGHLIGHTS

MASTERCLASS IN RESPIRATORY THERAPY:

Shifa Center of Professional Excellence (SCOPE) in collaboration with Shifa International Hospitals Ltd organized a Masterclass in Respiratory Therapy, to celebrate the untired efforts of Respiratory Therapist and their support to healthcare providers to provide the out of class patient care.

Mission of this activity was to emphasis pharmacological management and the monitoring of respiratory issues and discussion of the latest guidelines available globally and offer the case-based discussion sessions.

Dr. Aftab Akhtar (Consultant & Section Head, Pulmonology & Critical Care, Shifa International Hospitals Ltd, Islamabad) appreciated the contribution of respiratory therapist towards the patient is underestimated whereas respiratory therapists are there when patient struggle for a single breadth!

He further added that *“we always support training and development in building skills. This masterclass is the bridge to update ourselves with our knowledge and practices in the field”*.

The masterclass was attended by Dr. Monette B. Brombuela (Chief Nursing Officer, Shifa International Hospitals Ltd, Islamabad), Dr. Sohail Naseem (Consultant Pulmonologist, Shifa International Hospitals Ltd, Islamabad) and Respiratory Therapy Team.



PHARMACOTHERAPY IN LIVER TRANSPLANT PATIENTS:

This webinar was designed to enabled the learners in:

- Understanding the types and management of allograft rejection in liver transplant recipients.
- Adopting the treatment options for different systemic and infectious diseases in liver transplant recipients.
- Identifying the immunization in the liver transplant recipient.
- Appraising the important counseling points for liver transplant recipients.
- Identifying the immunosuppressant drugs for liver transplant patients (dosing protocol, TDM, common side effects, possible drug-drug interactions, Toxicity (Tacrolimus/cyclosporine).

HIGHLIGHTS

VITAMIN-D AWARENESS SEMINAR:

Shifa Center of Professional Excellence (SCOPE) hosted a Vitamin-D Awareness Seminar in collaboration with Shifa International Hospitals Ltd.

The seminar's speaker, Dr. Aamer Nabi Nur, Consultant Orthopedic Surgeon (Shifa International Hospitals Ltd, Islamabad) highlighted the recognition & management of Vitamin-D Deficiency.

The panel of experts, that included Dr. Sohail Hafeez, Consultant Orthopedic Surgeon (Shifa International Hospitals Ltd, Islamabad), Dr. Yawar Najam, Consultant Pediatrician (Shifa International Hospitals Ltd, Islamabad), Dr. Asaad Akbar Khan, Consultant Cardiologist (Shifa International Hospitals Ltd, Islamabad) and Dr. Maria Syed, Associate Consultant Dermatologist (Shifa International Hospitals Ltd, Islamabad) discussed the significance of Vitamin-D in their fields.

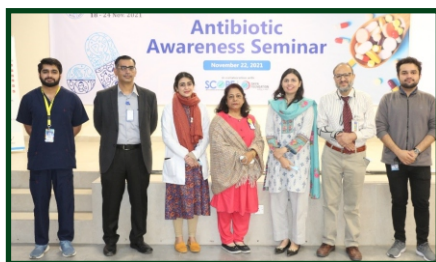


ANTIBIOTIC AWARENESS SEMINAR:

In lieu with World Antibiotic Awareness Week, Shifa Center of Professional Excellence (SCOPE) conducted a seminar on Antibiotic Awareness in collaboration with Department of Infectious Diseases, Shifa International Hospital.

The topics of seminar were Antibiotic Resistance: Burden and Causes, Medical Microbiology and Antibiotic Stewardship, The Rational use of Antibiotics in COVID-19 and Antibiotic Stewardship: The What, Why, Where, When and How.

Dr. Afreenish Amir, Medical Microbiologist/Technical Officer (National Institute of Health), Dr. M. Usman, Consultant Microbiologist (Shifa International Hospitals Ltd, Islamabad), Dr. Ejaz A. Khan, Section Head - Department of Infectious Diseases (Shifa International Hospitals Ltd, Islamabad) and Ms. Sundas Maria, Clinical Pharmacist (Shifa International Hospitals Ltd, Islamabad) were the speakers of the seminar.



HIGHLIGHTS

THYROID THERMAL ABLATION - WORKSHOP:

Shifa Center of Professional Excellence (SCOPE) conducted a workshop on Thyroid Thermal Ablation in collaboration with the Department of Radiology – Shifa International Hospitals Ltd, Islamabad.

The aim of this workshop was to strengthen knowledge, skill set, and practice in RFA of the Thyroid Surgery. First part of the workshop comprised of Didactic Lectures on RFA Basics, Technique of thyroid RFA, Indications for thyroid RFA and Complications of RFA by Dr. Shahzad Ahmad (Consultant Endocrinologist, Diabetes & Metabolism, Endocrinology Center of Utah, USA).

The second part of the workshop allowed participants to practice on the phantom and improve their thermal ablation competency and skill set.

Dr. Zeeshan Bin Ishtiaque (Chief Medical Officer, Shifa International Hospitals Ltd & Chief Executive Officer, eShifa) applauded Dr. Atif Rana (Chief of Radiology & Consultant Interventional Radiologist, Shifa International Hospital Ltd, Islamabad) for his efforts in planning this workshop and thanked Dr. Shahzad Ahmad for accepting our invitation and sharing his expertise to ensure a successful patient outcome.

He further added that we need to learn more, we need to collaborate with people more. This is the learning curve - the journey we are on!



UPDATE ON GYNECOLOGICAL MALIGNANCIES:

Shifa International Hospitals Ltd. in collaboration with the SCOPE organized a guest lecture (webinar) on “update on gynecological malignancies”. The guest lecture was delivered by Dr. Mian M. Khuram Shahzad, Associate Member & Medical Director, Department of Gynecologic Oncology, H. Lee Moffit Cancer Center Tampa, FL USA.

Dr. Shahzad shared the importance of methodologies used in medical treatment as per the criteria applied globally.

HIGHLIGHTS

ROBOTIC SURGERY (CHALLENGES IN DEVELOPING COUNTRIES):

A guest lecture (hybrid format) titled as "Robotic Surgery - Challenges in Developing Countries" was held by SCOPE in collaboration with Department of Surgery, Shifa International Hospitals Ltd.

Dr. Arif Malik, Consultant General Surgeon, Shifa International Hospitals Ltd, Islamabad, Pakistan, gave an overview of the "rise of robots," followed by Dr. Amir Ali Khan, Surgical Oncologist & General Surgeon, Franciscan Physicians Network, Munster/Dyer, IN, USA, who gave a detailed presentation on the "current state of robotic surgery and its challenges in the developing world."

Dr. Khan shared his experience using Robotic Surgery, which allows surgeons to conduct a wide range of complicated surgeries with greater precision, flexibility, and control. Dr. Khan welcomed the questions from the surgeons of different surgery and allied specialties.



PAIN LADDER:

Shifa Center for Professional Excellence (SCOPE) organized a lecture on pain ladder.

Mr. Muhammad Gulzaib Pharm-D, Rph Pediatric Clinical Pharmacist, Shifa International Hospitals Ltd discussed the pain ladder strategy proposed by the World Health Organization (WHO), to provide adequate pain relief for cancer patients.

HIGHLIGHTS

PEDIATRIC FUNDAMENTAL CRITICAL CARE SUPPORT COURSE (PFCCS):

Shifa Center of Professional Excellence (SCOPE) hosted "Pediatric Fundamental Critical Care Support Course (PFCCS)" in collaboration with Shifa International Hospitals Ltd. The course aimed at identifying and prioritizing assessment needs for critically ill pediatric patients.

The two day course was led by Dr. Ata Ullah Khan (Consultant Pediatric ICU, Shifa International Hospitals Ltd, Islamabad).



ANNUAL MEDICATION MANAGEMENT CONFERENCE (AMMC-SHIFA 2021):

Shifa Center of Professional Excellence (SCOPE) organized International Annual Medication Management Conference (AMMC-Shifa 2021) in collaboration with Department of Pharmacy Services – Shifa International Hospitals Ltd, Islamabad. This conference was conducted virtually under the theme of “Pharmacy: Always trusted for your health”, a theme coined for this year's World Pharmacist Day celebrations by International Pharmaceutical Federation – FIP, followed by a workshop.

Dr. Manzoor H. Qazi (Chief Executive Officer, Shifa International Hospitals Ltd) welcomed the conference attendees by appreciating pharmacists for their tireless work and said that “pharmacists are truly making a difference and impact on the patient's health”.

Speakers of the conference were Prominent names from the field of pharmacy including Mr. Asim Rauf (CEO, Drug Regulatory Authority of Pakistan – DRAP), Prof. Dr. Marianne F. Ivey, Prof. Emerita, James L. Winkle College of Pharmacy (University of Cincinnati – USA), Dr. Muhammad Tahir Aziz (CEO, SKMCH & RC, Peshawar), Mr. Zeeshan Ahmed (Director Regulatory, R&D Analytical Laboratory, Getz Pharma Pvt. Ltd Pakistan), Dr. Farrukh Malik (Chief Consulting Officer SYNTOF, France), Prof. Dr. Tauseef Rajput (Dean Faculty of Pharmaceutical and Allied Health Sciences – STMU, Islamabad), Mr. Mohammad Aslam Siddiqui (Director, Inpatient Pharmacy Services, Cleveland Clinic Abu Dhabi, UAE).



HIGHLIGHTS

THE RIDDLE OF HLA TYPING AND KIDNEY TRANSPLANT:

Shifa International Hospitals Ltd, Islamabad, and eShifa – Home Healthcare Services, in collaboration with Shifa Center of Professional Excellence (SCOPE), hosted a seminar on "The Riddle of HLA Typing and Kidney Transplant" at Services Institute of Medical Sciences, Lahore.

The aim of this seminar was to strengthen knowledge and skill set by discussing the role of HLA typing in renal transplantation and highlight the renal transplant immunology.

Brig[®] Prof. Dr. Tahir Aziz Ahmed (Consultant/Section Head Immunologist, SIHL) gave the talk titled "Transplant Immunology a Renal Perspective" during the seminar's first session.

Prof. Dr. Aizazmand Ahmed chaired the session, which was co-chaired by Prof. Dr. Waqar Ahmed, and panel experts included Dr. Zahid Rafique, Dr. Adil Manzoor and Dr. Ahad Qayyum.

Dr. Humaira Nasir (Consultant Histopathologist, SIHL) gave the talk titled "Recent Updates in Renal Transplant Pathology" during the seminar's second session.

Prof. Dr. Hafiz Ijaz chaired the session, which was co-chaired by Prof. Dr. Nauman Tareef and panel experts included Dr. Imran Nazir Ahmad, Dr. Mateen Akram and Dr. Irfan Ilahi.

During the seminar, Dr. Imran Nazir Ahmad (Consultant/Chief of Pathology, SIHL) emphasized the role of Human leukocyte antigen (HLA) and its importance in kidney transplant.

Chief Guest, Prof. Dr. Tayyiba Wasim (Principal/Prof. Obs/Gyne, SIMS) applauded Dr. Zahid Rafique (Head of Nephrology Department, SIMS), Dr. Imran Nazir Ahmad (Consultant/Chief of Pathology, SIHL), and Dr. Aurangzeb Afzal (Asst. Prof. Nephrology, SIMS) for their efforts in planning this seminar and thanked speakers (Brig[®] Prof. Dr. Tahir Aziz Ahmed and Dr. Humaira Nasir) for sharing their expertise to ensure a successful patient outcome.

She further added that the Services Institute of Medical Sciences, Lahore will continue to provide full assistance in conducting such academic activities in the future!



**Accreditation Council for
Continuing Medical Education (ACCME)**



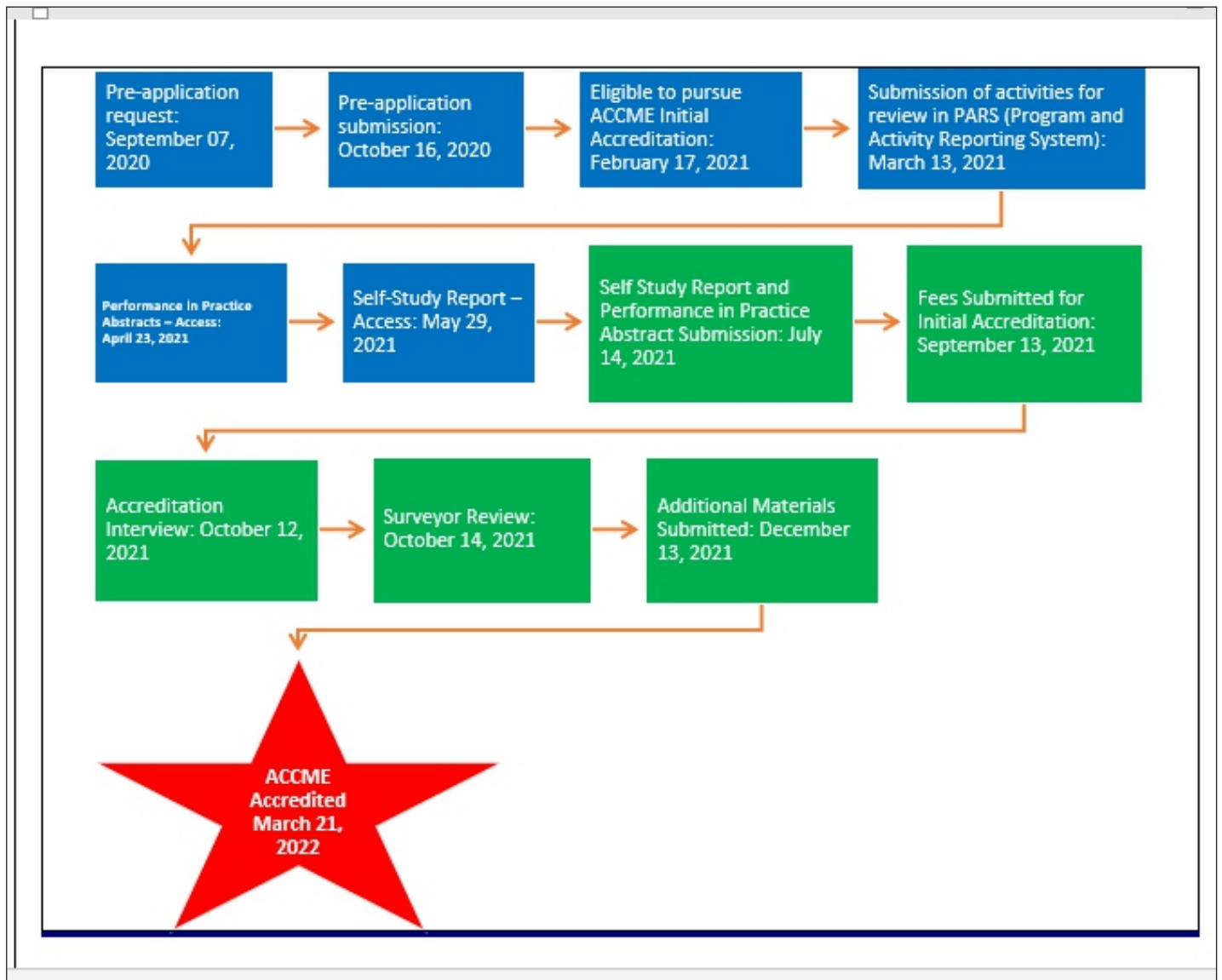
Shifa Foundation

is accredited by the Accreditation Council for Continuing Medical Education (ACCME®) to provide continuing medical education for physicians through March 31, 2024


Graham McMahon, MD, MMSC

3/31/2022
Decision Date

Accreditation Council for Continuing Medical Education (ACCME) Journey



Life Support Training (LiST)

Mission Statement:

To improve patient care by providing high-quality life support training and education to enable healthcare providers to perform vital Emergency Cardiovascular Care (ECC) and Cardio Pulmonary Resuscitation (CPR).

Shifa LiST Center (AHA Accredited International Training Center), organized the Basic Life Support Courses. These courses were attended by the healthcare providers (doctors and nurses) to enhance patient care by imparting critical Emergency Cardiovascular Care (ECC) and Cardio Pulmonary Resuscitation (CPR) education at the highest standards.



BLS PROGRAM UPDATES

Quality Assurance Audit:

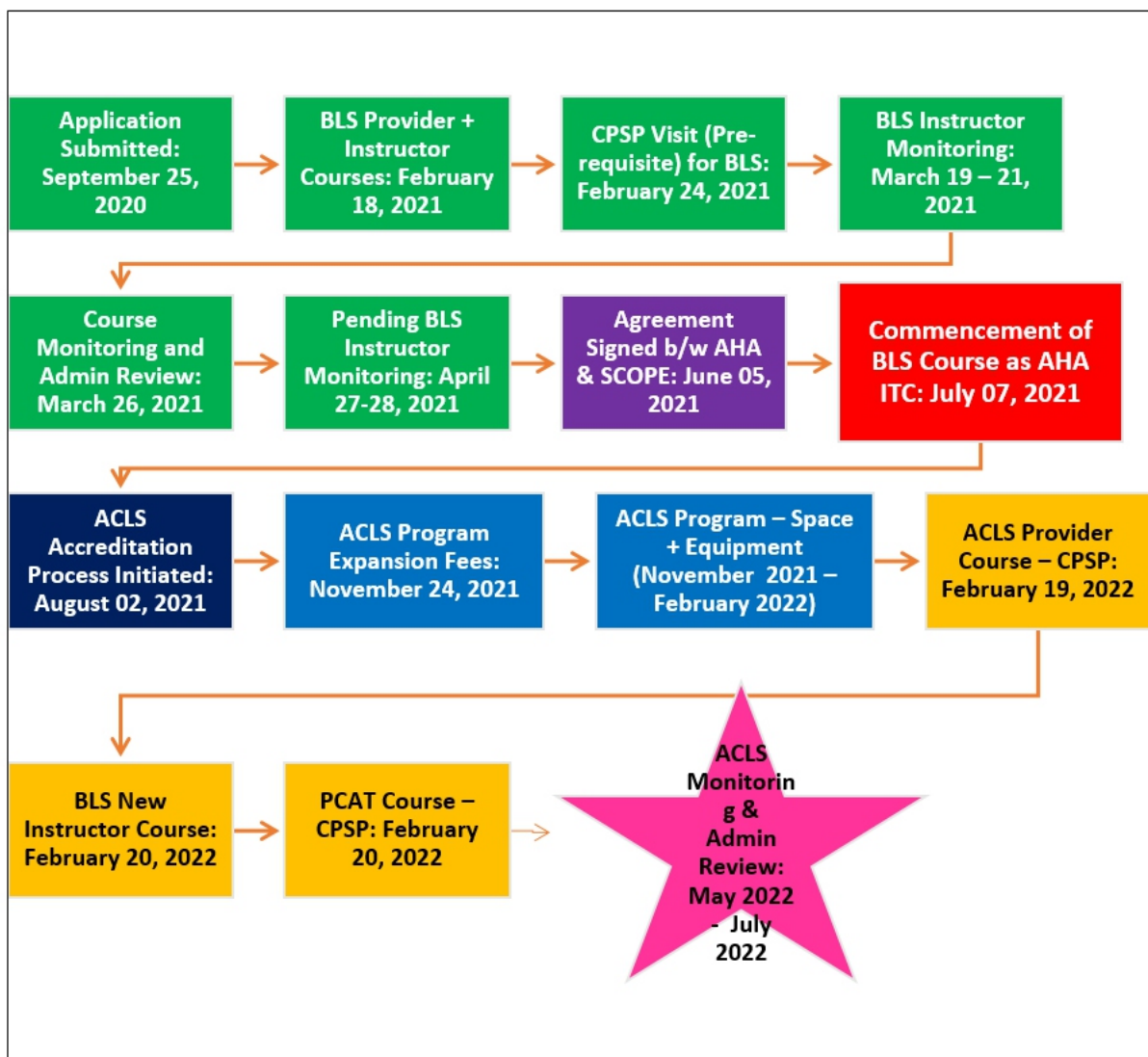
As per requirement of AHA, LiST has conducted the quality assurance audit of the BLS course.

Improvisation of BLS Courses due to COVID-19 Crisis:

LiST resumed the BLS courses for time being due to rise in cases of COVID-19.

BLS Instructor Development

To cater the needs of the region, management decided to increase the number of BLS Instructors. 03 candidates were nominated and successfully completed their training in CPSP.



ACLS PROGRAM EXPANSION

Self-Assessment of ACLS Accreditation:

LiST has started self-assessment for ACLS Accreditation, following prior areas has been found:

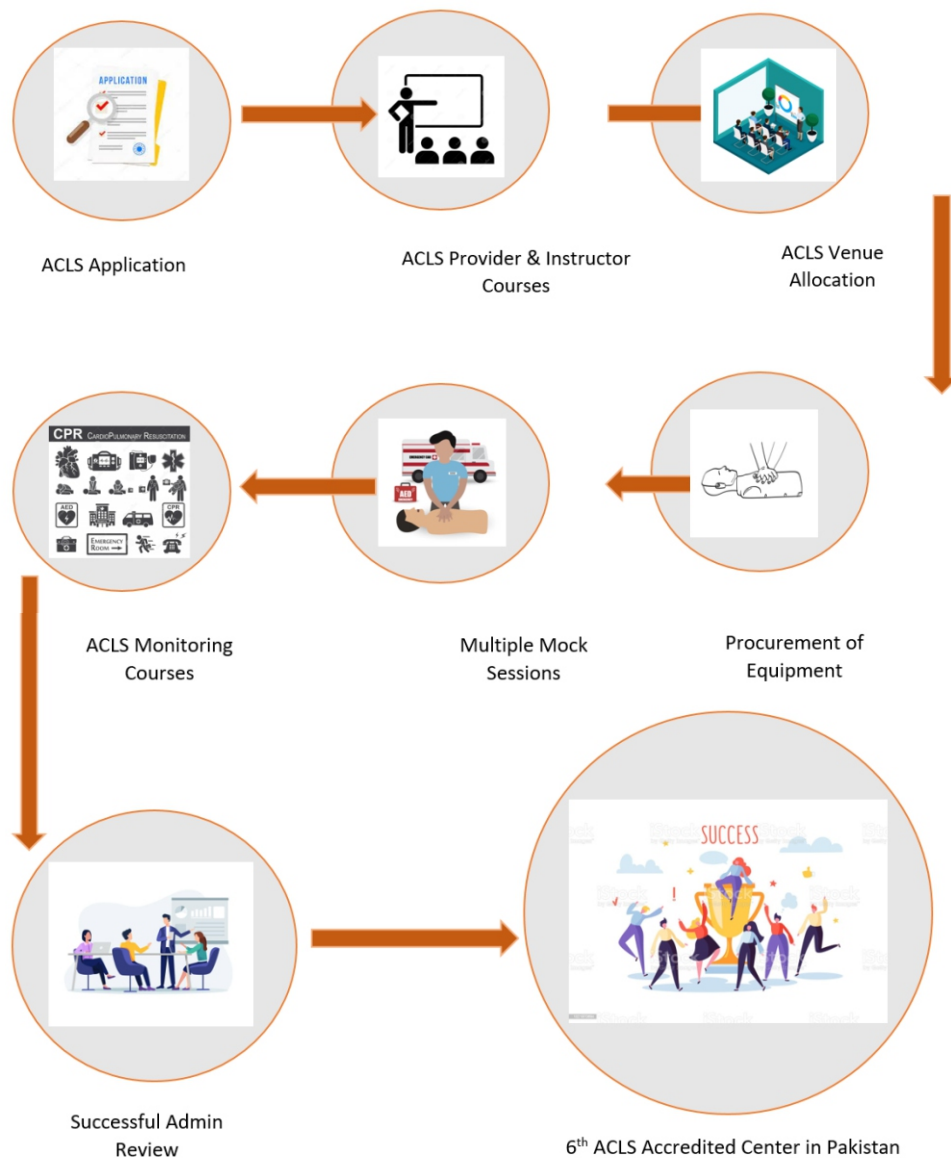
- Space Allocation
- Instructor Development
- Equipment Purchasing
- AHA Inspection

ACLS Instructors Development:

06 candidates successfully completed ACLS provider course training from College of Physicians and Surgeons of Pakistan (CPSP).

C-3 Floor – Shifa LiST Center:

C-3 Floor (Shifa LiST Center) officially inaugurated for the BLS courses.



COMMUNITY ENGAGEMENT PROGRAM

For the first time, a "Community Engagement Program" was organized for all lay rescuers under the leadership of BLS Instructors. This program covered rescue skills in CPR, the chain of survival, relief of foreign body airway obstruction, signs of a heart attack, cardiac arrest, stroke, and choking.

We believe that by training the community in life-saving skills, if the worst comes, they will be able to give someone the best chance of survival.



RESEARCH AND ETHICS

Mission Statement:

To encourage academic collaborations by increasing awareness of clinical trials and its various benefits for the patient as well as scientific advancement.



HIGHLIGHTS

MANUSCRIPT WRITING - WEBINAR SERIES:

Shifa Center of Professional Excellence (SCOPE) has organized a webinar series on Manuscript Writing for healthcare providers, management professionals and public to learn the basic requirements while researching, writing and submitting a research paper.

RANDOMIZED CONTROL TRIAL:

SCOPE conducted the guest lecture on “randomized control trial” by Lennart Gießing (Researcher - Konstanz University, Germany). During the webinar, Mr. Gießing, comprehended the importance of RCTs in research in medicine and international development and correlated the ICCT multi-site study in research.

STEPS OF RESEARCH METHODOLOGY: A BEGINNERS GUIDE – WEBINAR SERIES:

SCOPE has launched the regularly scheduled series in Research & Ethics to enhance the competency of the learners in research methodologies.

BIOSTATISTICS:

SCOPE and Shifa International Hospitals Ltd. are jointly organized a lecture entitled Biostatistics with aim to appraise the basics of biostatistics and understand types of variables and measurements levels with the basic's guidance about SPSS data entry.

DESIGNING YOUR RESEARCH – STEPWISE GUIDE:

After the amazing response from the learners, SCOPE launched 03 hours' virtual workshop. Instructor of the series is Ms. Maryam Abbas (Research & Ethics Officer, SCOPE). This workshop was designed to enhance the competency of the learners in domains of research.

A PRIMER ON RESEARCH AND PUBLICATION ETHICS:

A three-hour interactive workshop titled "A Primer on Research and Publication Ethics," was conducted with the goal of providing formal research and publication ethics training under the leadership of Dr. Farooq A. Rathore (Associate Professor & Consultant, AFIRM, Rawalpindi, Pakistan).

The workshop featured historical perspectives on research ethical violations as well as a timeline of bioethics development. Dr. Rathore discussed how to detect potential ethical difficulties that may develop during any stage of research and publication, as well as how to avoid them.



CLINICAL TRIALS

Development of Mechanism for Medical Fitness Test – Clinical Trial Employee:

Collaborated with Shifa International Hospital (Employee Health) to develop a mechanism for the employees of clinical trial.

Research Study - Perioperative Ischemic Evaluation-3 (POISE-3) - Clinical Trial:

A Large, international study found a drug that helps the blood clot; reduced life-threatening, major and critical organ bleeding in patients undergoing non-cardiac surgery — without increasing major vascular complications. A study called Peri-operative Ischemic Evaluation-3 (POISE-3) was conducted at multiple centers around the world, sponsored by Population Health Research Institute, Canada.

This was a collaborative endeavor that involved the Aga Khan University Hospital's research team as well. Prof. Dr. Muhammad Amir (Consultant General Surgery/Principal Shifa College of Medicine), who is also local principal investigator and co-author of the study said that Tranexamic acid revealed a consistent reduction in the risk of bleeding based on different definitions, and it reduced the chance of receiving 1 or 2 to 4 transfusions. "Given that 300 million procedures are performed each year around the world," Dr. Amir noted, "tranexamic acid has the potential for significant public health and clinical advantages."

Clinical Trial - Can Sino COVID Vaccine:

Pakistan is among 07 countries that will carry out the Phase III trial in compliance with National and International Ethical & Regulatory Guidelines. Dr. Ejaz A. Khan, Principal Investigator, on behalf of Shifa International Hospitals and Shifa Foundation (SCOPE) signed the agreement with CanSino Pharmaceuticals and National Institute Health (NIH).

Clinical Trial - LIVZON:

The Third phase of this multicenter, randomized, and double-blind placebo-controlled trial for COVID-19 was launched. Dr. Mian Amjad Sohail represented Shifa International Hospitals, Ltd and Shifa Foundation (SCOPE) as Principal investigator.

Clinical Trial - Colchicine for The Prevention of perioperative Atrial Fibrillation in Patients Undergoing Thoracic Surgery (COP-AF):

The Project of COP-AF is sponsored by the Population Health Research Institute, Hamilton Health Sciences Corporation, Canada. Dr. Muhammad Amir from Shifa International Hospitals Ltd, Islamabad is heading this project as Principal Investigator (PI).

TRAINING AND DEVELOPMENT

Mission Statement:

To enhance management professional's skill sets and productivity by providing customized capacity building training.



HIGHLIGHTS

ADMINISTRATIVE FELLOWSHIP PROGRAM:

To develop a workforce in health care that is equipped to take the leadership position and is able to deliver quality healthcare services for all, Shifa International Hospital in collaboration with SCOPE designed the fellowship program.

On the occasion of launching ceremony, Dr. Zeeshan Bin Ishtiaque (Chief Medical Officer, Shifa International Hospitals Ltd), Mr. Taimoor Shah (Chief Operating Officer, Shifa International Hospitals Ltd), Mr. Malik Uzair (Administrator HR&D, Shifa International Hospitals Ltd) shared the importance of this initiative on the journey of acquiring quality in health care. Senior Management of Shifa International Hospitals Ltd also attended the ceremony.



AGREEMENT WITH KOREAN EMBASSY & SHIFA FOUNDATION:

Shifa Foundation has signed an agreement with Korean Embassy. SCOPE has been tasked to design customized training program regarding first aid for the officials of Korean Embassy under the leadership of Emergency Medicine Department, Shifa International Hospitals Ltd, Islamabad.



HIGHLIGHTS

HEALTHCARE QUALITY AND ADMINISTRATION PROGRAM:

Shifa International Hospital in collaboration with Shifa Center of Professional Excellence (SCOPE), conducted a four-day training on the “Healthcare Quality and Administration Program”.

The course mission was to make participants appraise patient safety protocols and proven competencies that support quality improvement initiatives at the micro and macro levels in a health care facility.



HIGHLIGHTS OF BASICS OF MEDICAL EDUCATION - COURSE:

To enhance the wide range of evidence-based topics that aid in developing curriculum and utilization of assessment tools in their andragogic as well as effective ways of using digital learning tools and techniques for bedside teaching, a course was designed by Shifa Center of Professional Excellence (SCOPE).

Dr. Syeda Hanaa Fatima (Assistant Director Medical Education - Shifa International Hospitals Ltd), virtually facilitated the five-day course, which sparked a lot of debate and questions among the participants who joined from various renowned institutions around the region.

HIGHLIGHTS

AGREEMENT SIGNING CEREMONY - AGA KHAN PLANNING AND BUILDING SERVICES & SHIFA FOUNDATION:

With the vision to bridge knowledge gaps by providing capacity building services and innovative solutions, Shifa Foundation (SF) signed an agreement with Aga Khan Planning and Building Services (AKPBS), Pakistan.

Shifa Center of Professional Excellence (SCOPE) has been tasked with developing need-based educational interventions for Medical First Responders as well as formulating Mass Causality Management Plans under the leadership of Department of Emergency Medicine, Shifa International Hospitals Ltd (SIHL) for the Government Health Facilities/Hospitals in Gilgit-Baltistan.

Mr. Ejaz Karim (Head EM, AKPBS) represented Aga Khan Planning and Building Services and Dr. Khadeeja Azhar (Executive Director, Shifa Foundation) represented Shifa Foundation at the agreement signing ceremony hosted by Shifa International Hospital, Islamabad.

Mr. Zulfiqar Ali (Program Coordinator, AKPBS), Mr. Jaffar Ali (Manager Admin & Procurement, AKPBS), Dr. Darakhshan Jabeen (Director SCOPE), Dr. Abdus Salam Khan (Director ER, SIHL), Dr. Kh. Junaid Mustafa (Director Risk Management, SIHL), Dr. Adeel Tariq (Assistant Consultant ER, SIHL), Mr. Zia Ur Rehman (Sr. Manager Operations, SF), Mr. Tahir Habib (Associate Manager ME, SIHL), Ms. Tania Noreen (Program Officer, SCOPE) and Ms. Maryam Abbas (Research & Ethics Officer, SCOPE) also attended the aforementioned ceremony.



JINNAH'S ISLAMIC VISION OF PAKISTAN

SCOPE in collaboration with Shifa Tameer –e- Millat University (STMU), arranged a guest lecture on Jinnah's Islamic Vision of Pakistan by Prof. Dr. Anis Ahmad, Vice Chancellor, Riphah International University, Islamabad.

The aim of the lecture was to highlight the on ideology of Quaid – e- Azam about Pakistan. Prof. Dr. Ahmad said that “it is the need of time that our young generation should understand the essence of Islamic Vision of Pakistan”.

Prof. Dr. M. Iqbal Khan, Vice Chancellor, STMU thanked Prof. Dr. Ahmad for sharing his valuable knowledge.

HIGHLIGHTS

PROJECT MANAGEMENT SERIES

SCOPE organized a webinar on different aspects of Project Management for the management and healthcare professionals by Ms. Tania Noreen, CME Officer – SIHL & Program Officer – SCOPE.

IMPACT OF COVID - 19 ON EDUCATION SECTOR OF PAKISTAN

The abrupt outbreak of global pandemic of COVID-19 has victimized the economy, infrastructure and education sector of countries worldwide. SCOPE has organized a guest lecture on Impact of COVID - 19 on Education Sector of Pakistan.

Ms. Izza Farrakh is currently working as a Senior Education Specialist at the World Bank Pakistan. Previously she served as education specialist, Consultant, lead adviser, as well as senior technical advisor in various organizations of Pakistan.



**SHIFA
FOUNDATION**
making an effort